

## Steel Sourcing from China for Industrial Projects

---

Executing large-scale industrial projects in energy, oil & gas, and heavy machinery sectors requires more than just raw steel; it demands certified materials with guaranteed technical properties. Steel sourcing from China for B2B applications is an engineering discipline where the lack of pre-export control by the supplier drastically increases the risk of receiving non-compliant batches. Direct access to metallurgical clusters in Hebei and Jiangsu provinces allows for sourcing high-tech rolled products, but only under conditions of rigorous technical verification.

A high-quality metal foundation is essential for the subsequent deployment of [industrial automation and spare parts](#) in any modern enterprise.

### Procurement Errors When Ordering Steel from China

One of the most frequent errors is purchasing based on simplified nomenclature (e.g., "316L sheet" or "seamless pipe") without detailing specific requirements for impact toughness, yield strength, and surface condition. Another critical mistake is selecting a supplier based solely on the lowest price. Cheap metal is often accompanied by unstable chemical composition, variance in mechanical properties, and poor traceability, leading to weld cracks and structural failure under design loads.

### Types of Steel Products for Key Industries

We select steel products based on the specific needs of each industry:

- **Energy Sector:** Large-thickness boiler plates and heat-resistant seamless pipes capable of withstanding high pressure and steam temperatures.
- **Machinery:** High-precision long products (calibrated rounds h9/h11) with a homogeneous structure for high-speed CNC machining.
- **Construction:** Heavy-duty I-beams, channels, and angles with guaranteed yield strength for structural frames.
- **Chemical & Food Industries:** Stainless steel products (AISI 304, 316L, 321) resistant to aggressive environments and intergranular corrosion.
- **Mining & Recycling:** Wear-resistant plates (Hardox equivalents) with high Brinell hardness for abrasive wear conditions.

For facilities installing new [production lines](#), the geometric precision of the supplied steel is a prerequisite for correct equipment installation.

### Why Technical Specification Audit is Critical

A professional [engineering audit](#) during the planning phase allows for the substitution of scarce or excessively expensive European steel grades with proven Chinese equivalents without sacrificing reliability. We analyze how the material will behave during bending, cutting, and welding, selecting the optimal delivery state (annealed or normalized).

# Pre-payment Inspection: What the Inspector Verifies

The inspection before final payment includes mandatory checkpoints:

1. **Visual and Dimensional Control:** Checking for pits, laps, cracks, and corrosion.
2. **Geometric Measurement:** Instrumental control of actual tolerances for thickness, width, ovality, and straightness.
3. **Marking Verification:** Physical cross-check of Heat Numbers on the steel against MTC data.
4. **PMI Testing:** Instant chemical composition analysis using a portable spectrometer to verify the steel grade.
5. **Photo/Video Documentation:** Full reporting on the batch condition, packing, and loading process.
6. **Weight & Completeness Check:** Verifying gross/net weight and pack labels.

## Why In-country Quality Control Doesn't Replace China Inspection

Many companies rely on incoming inspection at their own warehouse, but by then, the goods are paid for, cleared through customs, and delivered. Discovering defects at this stage leads to project freezes and massive reclamation costs. Inspection in China allows for the detection of defects, heat mismatches, or documentation errors before the cargo leaves the plant, ensuring 100% legal and technical purity of the supply.

## Traceability: Heat Number and MTC Certificate

In the B2B sector, traceability is vital. The Heat Number must be physically stamped on the product or indicated on the tag of each bundle. We reconcile this data with the Mill Test Certificate (MTC). If data does not match, the batch is rejected, as steel without a confirmed heat is considered unmarketable for critical structures.

## Frequently Asked Questions

**How to verify the authenticity of an MTC?** We verify it via an inquiry to the archive of the manufacturing plant's laboratory, confirming the test date and batch number.

**Can you find an equivalent for GOST or ASTM standards?** Yes, our engineers compare the chemical composition and mechanical properties of Chinese grades (GB/T) with international standards to find technically comparable equivalents.

**What is the procedure for chemical analysis at the plant?** We use Positive Material Identification (PMI), which determines the content of Nickel, Chromium, Molybdenum, and other elements without damaging the metal.

**Which documents are critical for international import?** Contract, Invoice, Packing List, original MTCs, Certificates of Origin, and Conformity Certificates.

**What packing is considered reliable for sea transit?** Seaworthy Packing using VCI corrosion inhibitors, moisture-proof films, and reinforced steel frames or pallets.

**Can an inspection be conducted before final payment?** Yes, this is a mandatory step in our workflow. We provide a detailed inspection report, and the final balance is paid only after quality confirmation.

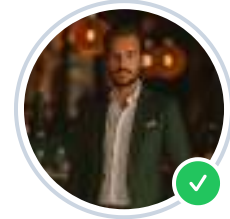
## Submit a Request for Steel Selection

Send us your technical assignment or specification, and we will select the optimal steel products from China with verification of heat, geometry, packing, and documentation for delivery to your project site.

### Maxim Vedunkov

**TECHNICAL DIRECTOR FOR METAL PRODUCTS**

Expert in metallurgy and international quality control. Specializes in pre-export audits of Chinese steel mills, MTC verification, and organizing critical steel supplies for the energy sector.



**EXPERT PROFILE**