

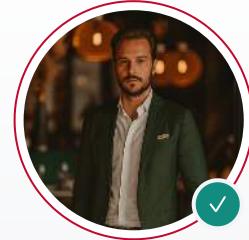
Metal-Asia

PLC Retrofit Without Full Cabinet Rebuild

Maksim Vedunkov

**SENIOR TECHNICAL DOCUMENTATION ENGINEER
(METAL-ASIA.PW)**

Technical documentation specialist with over 12 years of experience in industrial automation systems. Expert in creating comprehensive guides for PLC/DCS emergency procurement and system integration documentation.



EXPERT PROFILE

Technical Guide for Cabinet-Preserving Modernization and Component Replacement

Prepared by: Metal-Asia.pw Engineering Division

Document Type: Technical Modernization Specification

Applicable Industries: Oil & Gas, Petrochemical, Power Generation, Metallurgy, Mining, Pulp & Paper, Water & Wastewater, Cement, Food & Beverage, Pharmaceuticals, Machinery & Packaging, Turbine and Compressor Applications

Distribution: Procurement, Technical Department, Automation Engineers, Maintenance, Shutdown Planners, EPC / Integrators

Executive Summary

Full cabinet reconstruction represents the conventional approach to control system modernization. However, industrial realities frequently preclude this methodology: constrained shutdown windows, limited capital allocation, operational risk aversion, and physical infrastructure limitations. Cabinet-preserving retrofit strategies enable component-level modernization while retaining existing enclosures, wiring infrastructure, and mechanical interfaces.

This document defines the technical framework for executing retrofit, partial modernization, and drop-in replacement strategies without full panel reconstruction. It establishes compatibility

assessment protocols, identifies constraints that mandate cabinet rebuild versus those permitting preservation, and outlines the safety and management of change (MOC) requirements essential for retrofit execution.

Metal-Asia.pw provides technical assessment services, compatible component identification, and direct supply of retrofit-compatible hardware enabling modernization within existing infrastructure constraints.

Why Plants Avoid Full Cabinet Reconstruction

Shutdown Duration Constraints

Complete cabinet rebuild requires:

- Existing system decommissioning and removal
- Cabinet structural modification or replacement
- Complete rewiring with new terminal layouts
- New component installation and commissioning
- Comprehensive testing and startup validation

Typical duration: 2-6 weeks for complex systems, exceeding available maintenance windows in continuous process industries.

Capital Expenditure Limitations

Full reconstruction costs include:

- New enclosures and climate control systems
- Complete wiring harness replacement
- Engineering design and documentation
- Installation labor and commissioning
- Process downtime opportunity cost

Retrofit strategies reduce capital requirements by 40-70% while achieving functional modernization objectives.

Operational Risk Management

Proven cabinet configurations represent validated operational states. Reconstruction introduces:

- New failure modes in wiring and termination
- Commissioning instability and process upset risk
- Operator unfamiliarity with modified layouts
- Potential for design errors in reconstruction documentation

Retrofit preserves validated mechanical and electrical infrastructure.

Physical Infrastructure Constraints

Existing cabinets may be:

- Integrated into structural steel with removal impossibility
- Located in confined spaces prohibiting new cabinet dimensions
- Serving as environmental barriers (hazardous area containment, washdown protection)
- Supporting critical cable infrastructure with limited rerouting options

Regulatory and Validation Burden

Pharmaceutical, food, and nuclear applications require extensive re-validation for reconstructed systems:

- Installation qualification (IQ) redevelopment
- Operational qualification (OQ) re-execution
- Performance qualification (PQ) verification
- Regulatory filing and approval timelines

Retrofit with equivalent form-factor components may qualify as like-for-like replacement under change control rather than full re-validation.

Skill Resource Limitations

Reconstruction requires specialized capabilities:

- Panel shop fabrication resources
- Complex project management
- Extended commissioning engineering support

Retrofit execution leverages existing maintenance capabilities with targeted technical support.

Retrofit Strategy Types

Drop-In Replacement (DIR)

Definition: Direct substitution of failed or obsolete component with physically and functionally identical unit, requiring no cabinet modification.

Applicability:

- Exact part number availability (same or compatible revision)
- No functional upgrade requirements

- Emergency repair scenarios
- Strategic spares deployment

Technical Requirements:

- Identical mechanical dimensions and mounting interfaces
- Equivalent electrical characteristics (voltage, current, loading)
- Compatible connector pinouts and signal assignments
- Matching thermal dissipation profiles

Form-Fit-Function (FFF) Replacement

Definition: Substitution with component of identical physical dimensions and functional specifications but different internal architecture or manufacturer.

Applicability:

- Obsolete component with available compatible successor
- Technology migration (e.g., relay logic to solid-state)
- Manufacturer change with equivalent specification

Technical Requirements:

- Dimensional interchangeability verification
- Functional equivalence confirmation (timing, accuracy, resolution)
- Electrical interface compatibility (loading, isolation, protection)
- Mounting and termination compatibility

Adapter-Mediated Retrofit

Definition: New-generation component installation utilizing mechanical adapters, interface modules, or wiring harness modifications to accommodate physical differences.

Applicability:

- Significant technology generation gaps
- Physical dimension changes requiring mounting adaptation
- Connector interface incompatibility requiring transition harnesses
- Power supply voltage changes requiring conversion

Technical Requirements:

- Custom adapter design and fabrication
- Wiring harness modification or replacement
- Clearance and spacing verification with adapters installed
- EMC implications of adapter and harness modifications

Staged Modernization

Definition: Incremental component replacement across multiple shutdown windows, maintaining operational continuity while progressing toward full system modernization.

Applicability:

- Capital budget phasing requirements
- Shutdown window limitations preventing single-event completion
- Risk mitigation through incremental validation
- Learning curve optimization (early stages inform later decisions)

Technical Requirements:

- Interim compatibility between old and new components
- Network gateway or protocol translation for mixed-generation communication
- Documentation maintenance for hybrid system configuration
- Spare parts strategy for both legacy and modern components during transition period

Functional Upgrade Retrofit

Definition: Component replacement providing enhanced functionality (memory, speed, communication) while maintaining physical compatibility with existing infrastructure.

Applicability:

- Performance bottlenecks in existing system
- New communication protocol requirements
- Expanded I/O or processing capacity needs
- Cybersecurity improvement requirements

Technical Requirements:

- Backward compatibility with existing I/O and peripherals
- Software migration path and conversion tools
- Configuration translation and validation procedures
- Operator interface update requirements

When Retrofit Is Technically Valid

Mechanical Compatibility Conditions

Mounting Interface Preservation:

- Identical panel cutout dimensions and tolerances

- Compatible mounting hole patterns and hardware
- Equivalent chassis or DIN rail mounting provisions
- Sufficient depth clearance including cable bend radius

Physical Envelope Constraints:

- Component dimensions within existing space allowances
- Adequate clearance for heat dissipation and maintenance access
- Door closure and sealing integrity maintenance
- Weight distribution and structural loading limits

Environmental Compatibility:

- Operating temperature range suitable for existing cabinet climate control
- Humidity and contamination protection level maintenance
- Vibration and shock resistance adequate for installation location
- Hazardous area certification compatibility (if applicable)

Electrical Compatibility Conditions

Power Supply Compatibility:

- Voltage level match or compatible conversion provision
- Current capacity within existing supply ratings
- Inrush current characteristics within supply protection settings
- Power quality requirements (ripple, regulation, hold-up time)

Signal Interface Compatibility:

- Voltage and current levels matching existing I/O
- Isolation and protection equivalent to replaced component
- Loading characteristics within drive capacity of connected devices
- Signal speed and timing parameters compatible with process requirements

Grounding and Shielding:

- Grounding topology maintenance for safety and EMC
- Shield termination compatibility
- Ground loop prevention in modified configurations
- EMC emission and immunity maintenance

Thermal Compatibility Conditions

Heat Dissipation Equivalence:

- Heat generation within existing cooling capacity
- Airflow pattern compatibility with natural or forced convection

- Hot spot temperature limits within component specifications
- Adjacent component thermal impact assessment

Communication Compatibility Conditions

Network Interface Preservation:

- Physical layer compatibility (copper, fiber, wireless)
- Protocol stack compatibility or gateway provision
- Network timing and performance parameter maintenance
- Addressing and configuration methodology compatibility

When Full Rebuild Is Safer

Safety System Modifications

SIL-rated systems requiring recertification:

- Hardware fault tolerance architecture changes
- Diagnostic coverage modifications
- Safety reaction time alterations
- Proof test procedure modifications

Retrofit Risk: Safety case invalidation, recertification cost exceeding rebuild savings, potential regulatory rejection.

Fundamental Technology Migrations

Architecture changes incompatible with preservation:

- Centralized to distributed I/O transitions
- Proprietary bus to open standard Ethernet transitions
- Relay-based safety to electronic safety controller transitions
- Analog control to digital fieldbus transitions

Retrofit Risk: Excessive adapter complexity, reliability reduction, maintenance burden increase.

End-of-Life Infrastructure

Supporting components at obsolescence:

- Power supplies with no replacement availability
- Terminal blocks with insulation degradation
- Enclosure corrosion or sealing failure

- Cooling system inadequacy or failure

Retrofit Risk: New component failure due to supporting infrastructure degradation, cascading failures.

Cybersecurity Transformation

Security architectures requiring infrastructure changes:

- Network segmentation requiring physical separation
- Defense-in-depth requiring new conduit and routing
- Secure enclave construction requiring cabinet modification
- Air-gap requirements requiring communication infrastructure removal

Retrofit Risk: Inadequate security implementation, compliance failure, vulnerability introduction.

Regulatory Mandated Changes

Compliance requirements dictating configuration:

- New electrical code requirements (arc flash, short-circuit ratings)
- Environmental regulations (efficiency, emissions monitoring)
- Safety standards updates (machine guarding, emergency stop)
- Industry-specific mandates (NERC CIP, FDA 21 CFR Part 11)

Retrofit Risk: Partial compliance, audit failure, regulatory penalty.

Capacity and Performance Limitations

Infrastructure constraints preventing functional requirements:

- Insufficient I/O density for expansion requirements
- Inadequate power distribution for added components
- Cooling capacity exhaustion
- Physical space for required redundancy

Retrofit Risk: Compromised functionality, reliability reduction, future expansion prevention.

Technical Compatibility Matrix

Dimension and Mounting Parameters

PARAMETER	VERIFICATION METHOD	ACCEPTANCE CRITERIA
-----------	---------------------	---------------------

Panel cutout dimensions	Measurement against manufacturer drawing	±1mm tolerance for sealing surfaces
Mounting hole pattern	Template comparison or dimensional check	Alignment without modification
Overall depth	Clearance verification with cable management	Minimum 25mm rear clearance for ventilation
Weight	Comparison to mounting hardware rating	Within 80% of hardware capacity
Front panel projection	Door closure check	No interference with door or sealing gasket

Electrical Parameters

PARAMETER	VERIFICATION METHOD	ACCEPTANCE CRITERIA
Supply voltage	Specification comparison	Match or compatible conversion available
Supply current	Load calculation vs. supply capacity	Within 80% of circuit breaker rating
Inrush current	Manufacturer data review	Within supply protection curve
I/O voltage levels	Signal specification comparison	Direct compatibility or signal conditioning
Isolation voltage	Safety requirement verification	Meet or exceed existing specifications
Power dissipation	Thermal calculation	Within cooling system capacity

Environmental Parameters

PARAMETER	VERIFICATION METHOD	ACCEPTANCE CRITERIA
Operating temperature	Range comparison	Within cabinet climate control capability
Humidity rating	Specification review	Suitable for installation environment
Protection rating (IP/NEMA)	Enclosure integrity verification	Maintain or exceed existing protection
Vibration resistance	Application requirement comparison	Adequate for mechanical environment
Hazardous area certification	Certificate review	Valid for zone/division classification

Communication Parameters

PARAMETER	VERIFICATION METHOD	ACCEPTANCE CRITERIA
Physical interface	Connector and media comparison	Compatible or adapter available
Protocol support	Functionality verification	Required protocols supported
Network speed	Performance requirement comparison	Meet or exceed existing performance
Configuration methodology	Tool compatibility check	Existing engineering tools compatible

Cabinet-Level Constraints

Power Distribution Capacity

Assessment Requirements:

- Existing power supply rating and loading calculation
- Circuit protection coordination (breakers, fuses)
- Power distribution bus capacity
- Backup power and UPS compatibility

Retrofit Implications:

- New components must not exceed existing supply capacity
- Inrush characteristics must not nuisance-trip protection
- Power supply redundancy requirements must be maintained
- Grounding topology must accommodate new component requirements

Thermal Management

Assessment Requirements:

- Existing cooling capacity calculation (fan CFM, air conditioner BTU)
- Current thermal loading and temperature distribution
- Heat dissipation of proposed replacement components
- Airflow patterns and obstruction evaluation

Retrofit Implications:

- Component heat generation must not exceed cooling capacity
- Airflow patterns must maintain component temperature limits

- Hot spots must not develop in modified configuration
- Filter maintenance requirements must not increase prohibitively

Electromagnetic Compatibility

Assessment Requirements:

- Existing EMC mitigation measures (shielding, filtering, grounding)
- Emission characteristics of new components
- Susceptibility of new components to existing noise sources
- Cable routing and separation practices

Retrofit Implications:

- Emissions must not exceed existing suppression capability
- Susceptibility must not create new malfunction modes
- Shielding effectiveness must be maintained
- Cable routing modifications must not compromise EMC

Physical Space and Accessibility

Assessment Requirements:

- Clearance requirements for maintenance (withdrawal, testing)
- Door swing and panel access requirements
- Cable entry and exit routing
- Future expansion space requirements

Retrofit Implications:

- Component replacement must not reduce accessibility
- Maintenance procedures must remain executable
- Cable management must accommodate routing without stress
- Expansion capability must be preserved per asset strategy

Structural Integrity

Assessment Requirements:

- Cabinet mounting and seismic rating
- Weight distribution and center of gravity
- Vibration transmission and isolation
- Environmental sealing integrity

Retrofit Implications:

- Weight changes must not exceed structural limits

- Seismic bracing must remain effective
- Vibration isolation must accommodate new component characteristics
- Sealing and environmental protection must be maintained

Software and Network Constraints

Engineering Tool Compatibility

Assessment Requirements:

- Programming software version and licensing
- Configuration tool compatibility with new components
- Operating system requirements for engineering tools
- Virtualization capability for legacy software

Retrofit Implications:

- New components must be configurable with existing or upgraded tools
- License compatibility and upgrade paths must be verified
- Configuration conversion and migration tools must be available
- Training requirements for new tools must be assessed

Runtime Software Compatibility

Assessment Requirements:

- Control program version and compatibility
- Firmware requirements for new components
- Function block and instruction set compatibility
- Communication driver and protocol stack versions

Retrofit Implications:

- Existing programs must execute on new hardware or conversion must be validated
- Firmware versions must be compatible with system software
- Functionality must be preserved or migration path documented
- Communication integrity must be maintained

Network Architecture Constraints

Assessment Requirements:

- Network topology and media specifications
- Protocol versions and conformance classes

- Network loading and performance margins
- Security architecture and access control

Retrofit Implications:

- New components must integrate without network reconfiguration
- Protocol versions must be compatible or gateway provision made
- Network performance must not degrade with new components
- Security policies must accommodate new device characteristics

Data Management and Historian Integration

Assessment Requirements:

- Data tag structure and addressing
- Historian database schema and compatibility
- Operator interface graphics and tag references
- Reporting and analysis tool dependencies

Retrofit Implications:

- Tag addressing must be preserved or systematically remapped
- Historian integration must maintain data continuity
- Operator interfaces must function without extensive redevelopment
- Reporting systems must continue to access required data

Safety and Management of Change Requirements

Management of Change (MOC) Process

Required Assessments:

- Technical basis for change documentation
- Safety and health impact evaluation
- Operating procedure modification requirements
- Training and communication requirements
- Pre-startup safety review (PSSR) requirements

Retrofit-Specific Considerations:

- Component replacement must be evaluated for functional impact
- Safety system modifications require additional hazard analysis
- Procedure updates must reflect any operational changes
- Training must address any new diagnostic or interface features

Safety Instrumented System (SIS) Considerations

Requirements for SIS Components:

- SIL capability verification and documentation
- Safety requirements specification (SRS) alignment
- Proof test interval and diagnostic coverage maintenance
- Prior use justification for new components

Retrofit Constraints:

- Hardware fault tolerance must not be reduced
- Safety reaction times must meet process safety time requirements
- Diagnostic coverage must be maintained or improved
- Safety case modifications require formal approval process

Cybersecurity Management

Requirements for Network-Connected Components:

- Cybersecurity risk assessment for modifications
- Security patch and update management procedures
- Access control and authentication requirements
- Network segmentation and monitoring implications

Retrofit Considerations:

- New components must comply with existing cybersecurity policies
- Default passwords and configurations must be hardened
- Network access must be controlled and monitored
- Vulnerability management processes must include new components

Documentation and Configuration Management

Required Updates:

- P&ID and electrical drawing modifications
- Cause and effect matrix updates (if applicable)
- Loop diagram and termination drawing updates
- Configuration backup and version control

Retrofit Requirements:

- As-built documentation must reflect actual installation
- Configuration backups must include new component parameters
- Version control must track changes and enable rollback

- Spare parts lists must be updated for new components

Application Scenarios

Scenario 1: PLC Module Replacement in Active Production Line

Context: Automotive assembly line, continuous production, Siemens S7-400 PLC, CPU failure during peak demand period.

Constraint Analysis:

- Shutdown window: 4 hours maximum (shift change)
- Cabinet: Standard 800×600×200mm enclosure with limited rear access
- Existing infrastructure: ET200M distributed I/O, PROFIBUS network, OP7 operator panels

Retrofit Strategy: Drop-in replacement with identical CPU model, revision verification for firmware compatibility.

Technical Verification:

- Exact part number match: 6ES7414-3XM05-0AB0
- Hardware revision: Compatible with existing firmware V5.1
- Mounting: Standard S7-400 rack compatibility
- Memory: Compatible memory card format and capacity

Execution Approach:

- Pre-staged replacement CPU with identical configuration
- Program backup and restoration procedure validation
- PROFIBUS address and network parameter documentation
- 2-hour replacement window with 2-hour commissioning buffer

Metal-Asia.pw Support:

- Emergency sourcing of exact revision CPU from regional stock
- Pre-delivery firmware version verification
- Technical documentation package for maintenance team
- 24/7 phone support during replacement execution

Scenario 2: DCS Controller Replacement During Shutdown

Context: Chemical processing plant, 2-year turnaround, Emerson DeltaV system, controller obsolescence requiring replacement.

Constraint Analysis:

- Shutdown window: 72 hours
- Cabinet: Custom enclosure with integrated power distribution and fiber optic routing
- Existing infrastructure: DeltaV V11.3, redundant controller configuration, 200+ I/O points

Retrofit Strategy: Form-fit-function replacement with M-series controller upgrade, adapter plates for mounting compatibility.

Technical Verification:

- Controller dimensions: M-series vs. legacy controller mounting comparison
- Power requirements: 24VDC compatibility verification
- I/O carrier compatibility: Existing carriers support M-series modules
- Network: Ethernet interface compatible with existing switches

Execution Approach:

- Pre-shutdown controller pre-configuration and testing
- Adapter plate fabrication for mounting hole pattern difference
- Configuration conversion and simulation validation
- Parallel installation with hot cutover if redundancy permits

Metal-Asia.pw Support:

- M-series controller sourcing with compatible firmware
- Adapter plate mechanical design and fabrication
- Emerson technical liaison for configuration conversion support
- Spare controller provisioning for rapid replacement if issues arise

Scenario 3: SIL Module Replacement with Revision Control

Context: LNG terminal, safety instrumented system, HIMA HIMax platform, safety input module failure.

Constraint Analysis:

- Safety function: High-level trip on LNG storage tank (SIL 3)
- Cabinet: Purged enclosure with limited internal space
- Existing infrastructure: HIMax X-SB 01 system, safety network, HMI integration

Retrofit Strategy: Exact replacement with revision verification, no form-factor change acceptable due to safety case constraints.

Technical Verification:

- Part number: HIMatrix F3 DIO 8/8 01 (exact match required)
- Hardware revision: Must match safety case documentation (Rev. 03)
- Firmware: Compatible with existing safety program version

- Certification: TÜV SIL 3 certificate for specific application

Execution Approach:

- Safety case review and MOC documentation
- Proof test procedure execution before and after replacement
- Safety program download and verification
- Functional test with simulated inputs

Metal-Asia.pw Support:

- Global search for exact revision module with certification documentation
- HIMA factory verification of revision compatibility
- SIL verification report retrieval for audit trail
- Expedited delivery with chain of custody documentation

Scenario 4: Drive Module Replacement Without Cabinet Rebuild

Context: Paper mill, winder section, ABB DC drive from 1990s, power module failure, AC replacement would require motor replacement.

Constraint Analysis:

- Cabinet: Custom built-in enclosure with limited depth (400mm)
- Cooling: Existing fan cooling system, no space for additional heat exchangers
- Power: 480VDC armature, 300VDC field, existing transformer and reactor
- Control: Existing tachometer and current feedback infrastructure

Retrofit Strategy: DC drive modern replacement with form-factor adapter, compatible power terminals, existing cooling utilization.

Technical Verification:

- Physical dimensions: Modern DCS800 vs. existing DCS500 frame size comparison
- Terminal locations: Adapter design for power cable routing
- Cooling: Heat dissipation comparison and airflow verification
- Control interface: Tachometer and encoder compatibility

Execution Approach:

- Custom adapter plate design for mounting and terminal alignment
- Power cable harness modification for terminal compatibility
- Control signal interface verification and adaptation
- Commissioning with existing motor and mechanical load

Metal-Asia.pw Support:

- DCS800 drive specification for retrofit application
- Mechanical adapter design and fabrication coordination
- ABB technical support for parameter conversion
- Commissioning engineer deployment for startup assistance

Scenario 5: Urgent Supply for Critical Facility

Context: Water treatment plant, SCADA system failure, Allen-Bradley PLC-5 communication processor failure threatening municipal water supply.

Constraint Analysis:

- Emergency: 6-hour resolution requirement to prevent supply interruption
- Cabinet: Outdoor enclosure with limited workspace
- Existing infrastructure: PLC-5/40 processor, 1771 I/O, DH+ network, PanelView 1000
- Obsolescence: PLC-5 platform discontinued, no manufacturer stock

Retrofit Strategy: Compatible replacement with 1771 adapter module, preserving I/O and minimizing rewiring.

Technical Verification:

- Adapter module: 1769-ECR right-angle connector for Ethernet transition
- Communication: Ethernet/IP to DH+ gateway for SCADA integration
- I/O: 1771 I/O retention via 1756-DHRIO module in ControlLogix rack
- Programming: RSLogix 5000 with conversion tool for PLC-5 logic

Execution Approach:

- Emergency sourcing of compatible hardware configuration
- Pre-configured adapter and gateway modules
- Rapid installation with existing I/O preservation
- SCADA communication reconfiguration for Ethernet/IP

Metal-Asia.pw Support:

- Emergency stock location for compatible hardware
- Pre-configuration of adapter modules based on system documentation
- Next-flight delivery with customs clearance coordination
- Remote technical support for configuration and commissioning

Required Customer Data for Retrofit Support

Existing System Documentation

Essential Information:

- Complete part number and revision of component to be replaced
- System architecture drawings (P&ID, network topology, single-line diagrams)
- Cabinet layout and dimensional drawings
- Electrical schematics and termination diagrams
- I/O lists and signal specifications

Infrastructure Assessment

Physical Constraints:

- Cabinet internal dimensions and clearances
- Mounting rail or chassis specifications
- Cable entry and routing constraints
- Climate control specifications and capacity
- Power distribution ratings and available capacity

Functional Requirements

Operational Specifications:

- Control function description and criticality
- Performance requirements (speed, accuracy, timing)
- Communication protocol and network requirements
- Safety integrity requirements (SIL rating, if applicable)
- Environmental conditions (temperature, humidity, classification)

Modernization Objectives

Strategic Intent:

- Is this like-for-like replacement or functional upgrade?
- Future expansion requirements
- Cybersecurity improvement requirements
- Maintenance and support capability objectives
- Budget constraints and timeline requirements

Risk Tolerance

Decision Parameters:

- Acceptable downtime duration for implementation
- Revision flexibility for exact replacement
- Compatible replacement authorization scope

- Testing and validation requirements
- Rollback capability requirements

Factors Accelerating Retrofit Selection

Complete System Documentation

Availability of current drawings, specifications, and configuration files enables immediate compatibility assessment without field survey requirements.

Pre-Approved Alternative Specifications

Advance authorization for compatible replacements and revision flexibility eliminates approval delays during sourcing activities.

Configuration Backup Availability

Current program and configuration backups enable rapid restoration procedures and reduce commissioning risk.

Maintenance Window Coordination

Alignment of retrofit execution with scheduled maintenance eliminates production impact and enables thorough testing.

Parallel System Preparation

Pre-configuration and testing of replacement components in laboratory environment reduces field commissioning time and risk.

Engineering Resource Availability

Direct technical communication between Metal-Asia.pw engineers and customer automation team enables rapid clarification and decision-making.

Risk Reduction Mechanisms

Pre-Implementation Assessment

Comprehensive compatibility analysis including dimensional verification, thermal calculation, and electrical loading analysis prior to procurement commitment.

Staged Implementation Planning

Phased execution strategy enabling validation at each stage with rollback capability if issues arise.

Factory Acceptance Testing

Pre-delivery functional testing of replacement components in configuration representative of field installation.

Site Acceptance Testing

Structured commissioning protocol with documented verification of all critical functions before production release.

Spare Parts Strategy

Provisioning of strategic spares for both legacy and modern components during transition period to mitigate availability risk.

Technical Support Continuity

24/7 engineering support availability during critical implementation phases with escalation path to manufacturer technical resources.

Emergency Retrofit Logic

Emergency Classification

Critical Infrastructure Failure:

- Immediate safety hazard
- Environmental release risk
- Regulatory violation imminent
- Public health or safety impact

Response: Immediate assessment of compatible replacement options, emergency sourcing activation, field engineer deployment, temporary operation authorization if safe.

Production-Critical Failure:

- Revenue impact exceeding \$100K per day
- Contractual delivery commitment at risk
- Sequential process impact (downstream units affected)

Response: 24-hour compatible replacement identification, expedited logistics, remote technical support, rapid commissioning protocol.

Emergency Assessment Protocol

1. Immediate Safety Verification

- Confirm safe state achievement
- Verify no immediate hazard from temporary condition
- Establish temporary monitoring if continued operation required

2. Rapid Compatibility Assessment

- Identify critical vs. non-critical compatibility parameters
- Assess temporary mitigation measures for minor incompatibilities
- Determine minimum viable configuration for safe operation

3. Sourcing Acceleration

- Activate global inventory search across all qualified sources
- Evaluate compatible alternatives for immediate availability
- Consider temporary substitution with planned permanent replacement

4. Implementation Risk Management

- Document deviations from standard procedures
- Establish enhanced monitoring for temporary configurations
- Schedule permanent solution implementation at earliest opportunity

Metal-Asia.pw Support Scope

Technical Assessment Services

- Retrofit feasibility analysis and recommendation
- Compatibility matrix development for candidate replacements
- Cabinet constraint assessment and modification specification
- Thermal and electrical loading calculations

Component Sourcing

- Exact replacement sourcing from global inventory
- Compatible alternative identification and specification
- Adapter and interface module procurement
- Emergency sourcing for critical failures

Engineering Support

- Mechanical adapter design and fabrication coordination
- Electrical interface design and harness specification
- Configuration conversion and migration assistance
- Commissioning support and startup assistance

Documentation Services

- As-built drawing updates reflecting modifications
- MOC documentation preparation
- Safety case impact assessment
- Spare parts list updates

Project Management

- Shutdown planning and coordination
- Logistics coordination for time-critical deliveries
- Installation contractor liaison
- Commissioning schedule development

Conclusion

Cabinet-preserving retrofit strategies enable industrial automation modernization within constraints that prohibit full reconstruction: limited shutdown windows, capital limitations, operational risk aversion, and physical infrastructure restrictions. Successful retrofit execution requires systematic assessment of mechanical, electrical, thermal, and communication compatibility, distinguishing between applications suitable for preservation and those mandating reconstruction.

Metal-Asia.pw provides the technical assessment capabilities, global sourcing networks, and engineering support services necessary for safe retrofit execution. Our approach balances modernization objectives with operational constraints, ensuring that component-level upgrades achieve functional improvement without compromising system reliability, safety integrity, or maintainability.

Retrofit is not merely a cost-reduction strategy—it is often the only technically viable path for maintaining critical infrastructure in continuous process industries. This document provides the framework for that path, enabling informed decisions between preservation and reconstruction based on objective technical criteria rather than defaulting to conventional full-rebuild methodologies.

For retrofit assessment, compatible component identification, or emergency replacement support, contact Metal-Asia.pw Engineering Division with complete system documentation as specified in this document.

Metal-Asia.pw

Direct Industrial Automation Supply
Retrofit & Modernization Engineering
Cabinet-Preserving Solutions

Retrofit execution requires careful technical assessment and risk management. This document provides general guidance; specific applications require detailed engineering analysis and may necessitate consultation with equipment manufacturers and regulatory authorities.