

MDR-7506

SERVICE MANUAL

Ver 1.1 2002.07

US Model
AEP Model



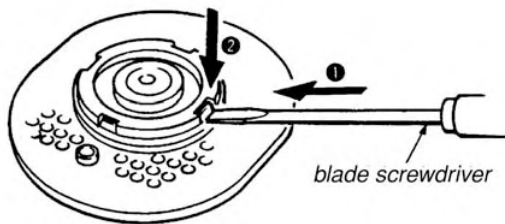
SPECIFICATIONS

Type	Circum-aural, closed
Driver units	40 mm dia., dynamic type
Impedance	63 ohms at 1 kHz
Sensitivity	106 dB/mW
Rated power	0.5 W
Power handling capacity	1 W
Frequency response	5 - 30,000 Hz
Cord	3 m (extended length) coiled cord with a stereo unimatch plug
Weight	Approx. 230 g (without cord)

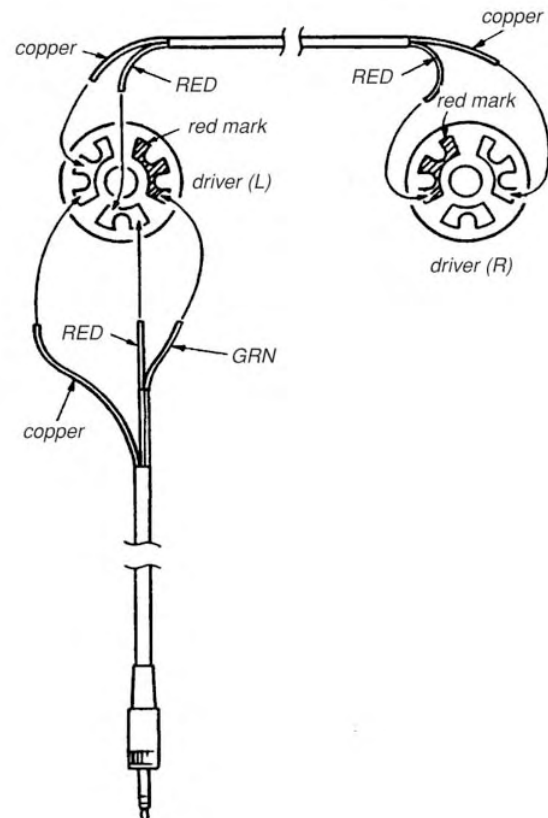
1. DISASSEMBLY

Note : Follow the disassembly procedure in the numerical order given.

- Remove 4 pawls as illustrated below.



2. MOUNTING DIAGRAM



STEREO HEADPHONES

SONY®

9-956-092-13
2002G0200-1
© 2002.07

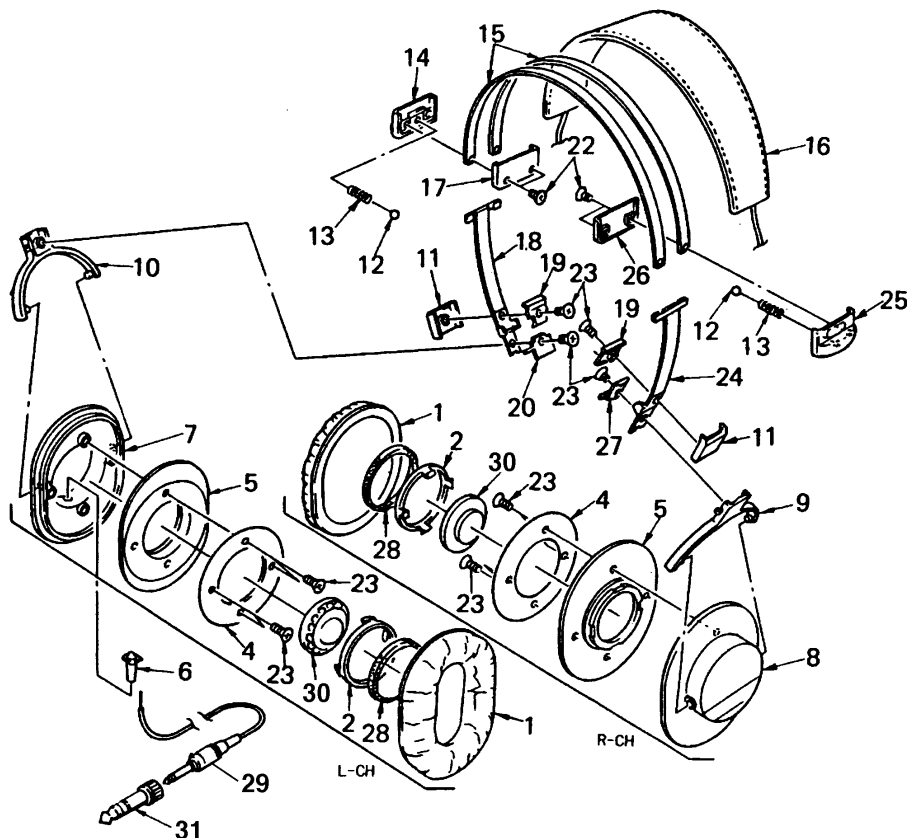
Sony Corporation
Personal Audio Company
Published by Sony Engineering Corporation

3. EXPLODED VIEWS

NOTE:

- -XX, -X mean standardized parts, so they may have some differences from the original one.
- Items marked “*” are not stocked since they are seldom required for routine service. Some delay should be anticipated when ordering these items.

- The mechanical parts with no reference number in the exploded views are not supplied.
- Hardware (# mark) list and accessories are given in the last of this parts list.



Ref. No.	Part No.	Description	Remarks	Ref. No.	Part No.	Description	Remarks
1	X-2113-124-1	PAD ASSY, EAR		19	2-113-123-11	LID, HINGE CASE	
2	2-113-129-01	STOPPER, DRIVER		20	2-113-130-11	LID (LEFT), HANGER	
* 4	2-113-152-02	REGISTER, FRONT		22	7-685-235-19	SCREW +KTP 2.6X10 TYPE2 SLIT	
* 5	2-113-140-01	PLATE, FRONT		23	7-685-232-19	SCREW +KTP 2.6X5 TYPE2NON-SLIT	
6	2-113-137-01	BUSHING		24	X-2113-102-1	SLIDER (RIGHT) ASSY	
7	X-4941-333-1	HOUSING (LEFT) ASSY		25	X-2113-115-1	CASE (RIGHT) ASSY, CLICK	
8	X-4941-334-1	HOUSING (RIGHT) ASSY		* 26	2-113-125-11	LID (RIGHT), CLICK CASE	
9	2-113-133-11	HANGER (RIGHT)		27	2-113-131-11	LID (RIGHT), HANGER	
10	2-113-132-11	HANGER (LEFT)		28	2-113-149-01	RING, URETHANE	
11	2-113-134-11	CASE, HINGE		29	1-580-792-21	CORD (WITH PLUG)	
12	7-671-113-01	STEEL, BALL 3		30	1-542-491-11	DRIVER (040F001P)	
13	2-113-146-01	SPRING, COMPRESSION		31	1-506-589-11	ADAPTOR, PLUG	
14	X-2113-116-1	CASE (LEFT) ASSY, CLICK		*****			
* 15	2-113-122-01	BAND, HEAD		ACCESSORIES			
16	X-2113-112-1	CUSHION ASSY, HEAD		*****			
* 17	2-113-124-11	LID (LEFT), CLICK CASE		2-113-147-11 CASE, SOFT			
18	X-2113-101-1	SLIDER (LEFT) ASSY					

MEMO

REVISION HISTORY

Clicking the version allows you to jump to the revised page.

Also, clicking the version at the upper right on the revised page allows you to jump to the next revised page.

[illegible]